

GOODWAYPROX™

RP-DX Tube Cleaner

Operating and Maintenance Instructions



CONTENTS:

IMPORTANT SAFETY INSTRUCTIONS.....	3
ELECTRICAL PRECAUTIONS.....	3-4
OPERATIONAL PRECAUTIONS.....	4
THE RP-DX.....	5
FORWARD/REVERSE FOOT PEDAL.....	5
OPERATION.....	5-6
USING THE QUICK-CONNECT FLEXIBLE SHAFT.....	6
STORAGE.....	7
MAINTENANCE.....	7
SPECIFICATIONS.....	7
TROUBLESHOOTING.....	8
WIRING DIAGRAMS RP-DX (115V 60HZ AND 230 VOLT 50/60 HZ).....	9
PARTS LIST/BREAKDOWN.....	10-11
EXPLODED VIEW.....	12-14

Thank you for purchasing GoodwayProX RP-DX TUBE CLEANER. We appreciate your business and look forward to serving you in the future. As with all GoodwayProX products, you can be assured that the finest quality components and workmanship have gone into this machine.

Please take a few minutes to read the following Operating and Maintenance Instructions. By carefully following the instructions, you will obtain years of trouble free service from this product. Please pay particular attention to the safety instructions and exercise caution when using this machine

GOODWAYPROX™

SMART CLEANING & MAINTENANCE SOLUTIONS

For Sales & Service Call: 203-616-2572 or 888-368-0001



WARNING



SAVE THESE INSTRUCTIONS!

IMPORTANT SAFETY INSTRUCTIONS

Read all instructions before using this tube cleaning machine.

1. Read all instructions before using unit. Failure to follow all instructions may result in serious injury.
2. Keep objects, loose clothing, hair and body parts away from openings and moving parts.
3. Do not overreach or stand on unstable support. Keep good footing and balance at all times.
4. Stay alert – watch what you are doing!
5. Do not operate the product when fatigued or under the influence of alcohol or drugs.
6. Keep operation area clear of all persons.
7. Use personal safety equipment. Always wear eye protection. Dust mask, non-skid rubber sole safety shoes, hard hat, gloves and hearing protection are recommended.
8. Use only GoodwayProX recommended accessories and replacement parts.

ELECTRICAL PRECAUTIONS

- Never expose the unit to rain or the elements. Store unit indoors in a cool, dry area.
- Make certain that the power source conforms to the requirements of the equipment.
- For proper protection this product must be grounded. Always plug the power cord into a properly grounded receptacle. Improper connection of the equipment-grounding conductor introduces risk of electrocution. Check with a qualified electrician or service personnel if you are in doubt as to whether an outlet is properly grounded.
- **DANGER:** Never remove the grounding prong from the power cord plug or use an adapter that eliminates ground.

- This unit is equipped with a Ground Fault Circuit Interrupter (GFCI) at the plug end of the cord for electrocution protection. **DO NOT REMOVE THIS DEVICE!!** If replacement of the plug or cord becomes necessary, use only identical replacement parts that include GFCI protection.
- **⚠ WARNING**– To reduce the risk of electrocution, keep all connections dry and off the ground. Do not handle the unit or electrical plug with wet hands.
- When unplugging the power cord, grasp the plug – not the cord.
- Unplug the power cord when servicing the unit or leaving the machine unattended
- Do not pull on the power cord, close a door on the cord or pull the cord around sharp corners. Keep the cord away from hot surfaces.
- Do not use the machine if it has a damaged cord or plug.

OPERATIONAL PRECAUTIONS

- Do not use in an environment or on objects that are above 175°F (79°C).
- Do not use with flammable or explosive fluids such as gasoline, fuel oil, kerosene, etc. Do not use in explosive atmospheres.
- Keep clear of moving shaft. Make sure the shaft will not catch on anything while in use.
- Check flexible shaft for weak or worn condition before each use. Make certain that all connections are tight and secure.
- If the machine does not operate properly or is damaged contact GoodwayProX Customer Service.
- Disconnect the plug from the power source and turn off water supply before disconnecting hoses, fittings, or flexible shaft and before making any adjustments or changing accessories. Such preventive safety measures reduce the risk of starting the unit accidentally.
- Check for misalignment or binding of moving parts, breakage of parts, and any other condition which may affect the tool's operation. If damaged, have the tool serviced before using. Many accidents are caused by poorly maintained tools.
- If servicing this unit, use only identical replacement parts. Follow instructions in the Maintenance section of this manual. Use of unauthorized parts or failure to follow maintenance instructions may create a risk of electric shock or injury.
- Be sure to select the proper size flexible shaft and tool for the job. Do not force the tool. Use the correct tool for the application.
- **DANGER!! DO NOT OPERATE THE UNIT WITH THE COVER(S) REMOVED WHEN MOVING PARTS AND ELECTRICAL CONNECTIONS ARE EXPOSED!!**

THE RP-DX

How It Works

The RP-DX uses a brush or other cleaning tool on the end of a rotating, plastic-encased flexible steel shaft. As the operator feeds the rotating brush/shaft assembly through the tube, the brush/tool loosens any deposits (mud, sand, etc) as water flows through the casing to flush them out. An electronic valve automatically opens the water flow only when shaft is rotating. The RP-DX is designed for tubes with an inside diameter between 1/4" and 1" (6.4 - 25.4mm).

FORWARD/REVERSE FOOT PEDAL

- The direction the shaft rotates is controlled by the two-way foot pedal.
- Clockwise rotation facing the tube is considered the "Forward" direction
- Position the foot pedal like the gas pedal of a car and rock your foot back and forth to control direction.

OPERATION

- Connect water hose to water inlet. Use clean water supply. Make sure screen washer is in place.
- Open water supply line. Water will flow through the flexible shaft assembly only when the machine is running. **DO NOT RUN THE UNIT DRY AS THIS MAY DAMAGE THE SEAL!!**
- Plug electric cord into an outlet in with appropriate voltage and amperage. Test the GFCI by pushing the "Test" button and then the "Reset" button. The "POWER ON" light should light up. If not, push the "Reset" button and try again.
- Make sure drive manifold of the machine is parallel to floor.
- Select proper size cleaning tool and attach to end of flexible shaft. Never use a tool larger than I.D. of tube.

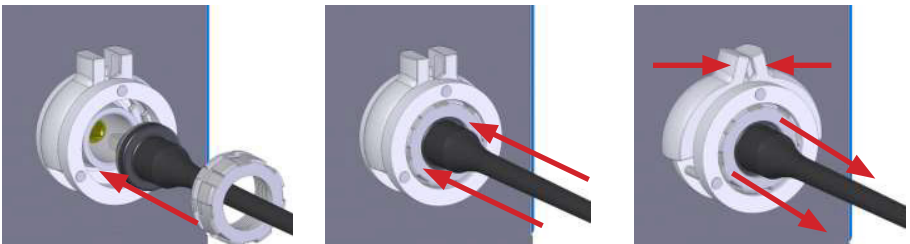
NOTE: Most tubes are rolled outward at tube sheet. Always measure I.D. beyond roll or consult manufacturer's manual for tube O.D. and gauge.

- Remove footswitch from storage compartment and place it in a convenient position for operation.
- Uncoil flexible shaft completely and arrange the shaft in the largest loop possible to minimize "helixing" (shaft coiling on itself under power).
- Position the stop on the flexible shaft so when the shaft is inserted into the tube up to the stop the tip of the cleaning tool is clear of the end of the tube.
- Check the direction of the spiral in the tube and start with the appropriate direction using the foot pedal. "FORWARD" on the machine is clockwise brush rotation when facing the tube. Use the opposite rotational direction ("REVERSE") when extracting the tool from the tube.

- Insert brush/tool into the tube. Press “FORWARD” foot pedal. Feed the shaft into the tube. **DO NOT FORCE SHAFT DOWN TUBE** - Allow machine to do the work. If resistance is felt, back off 2"-3" (0.50 - 0.75 m) and feed shaft again until it goes easily. If resistance is too great, use a smaller cleaning tool or check tube for blockage.
- **IMPORTANT: Only Nylon Spiral Brushes can be used in the counter-clockwise direction. ATTEMPTING TO SPIN OTHER CLEANING TOOLS IN THE COUNTER CLOCKWISE DIRECTION MAY RESULT IN DAMAGE TO THE FLEXIBLE SHAFT, TOOL, OR TUBE!!!**

USING THE QUICK-CONNECT FLEXIBLE SHAFT

- Select the proper size flexible shaft for tube diameter and length to be cleaned.
- Make sure the o-ring on the shaft insert is lubricated with appropriate grease (compatible with Buna-N or “Nitrile”).
- Check unit’s manifold for debris and clean if necessary before attaching flexible shaft.
- Insert the square driver of flexible shaft into the drive shaft of the machine (inside the manifold). The shaft driver may have to be rotated slightly for proper alignment.
- Push shaft insert with the o-ring all the way into the machine manifold.
- Push the shaft locking nut firmly into the quick connect latches until they click, locking the nut in place.
- Make sure both latches are properly engaged by gently pulling on the shaft Strain Relief.
- To remove, open latches by pinching tabs together and pull shaft out of manifold



STORAGE

Disconnect water supply line. Disconnect the flexible shaft and drain water to prevent rusting of shaft. Do not store machine where residual water in machine may freeze. Refer to Flexible Shaft manual for shaft storage.

MAINTENANCE

- Lubricate Chain and Sprockets every 100 hours of running time with a good grade non-detergent SAE 20 to 50 weight petroleum-based oil or NLGI no. 1 or no. 2 grade mixed-base or lithium-soap grease. Apply lubricant to chain sparingly, and then wipe off excess. **DANGER! MAKE SURE POWER IS OFF BEFORE LUBRICATING CHAIN!**
- Check all louvers and water drain holes for obstructions, check for decaying hoses and wire insulation, check for leaks.

SPECIFICATIONS

	RP-DX-60	RP-DX-A
Motor	1/4 HP AC Motor (1 ϕ)	1/2 HP AC Motor (1 ϕ)
Power Requirements	115 VAC/10.0 Amps 60 HZ	230 VAC/5.0 Amps 50/60 HZ
Shaft Rotational Speed	Approx. 850 RPM	
Maximum Water Pressure	100 PSI (7 BAR)	

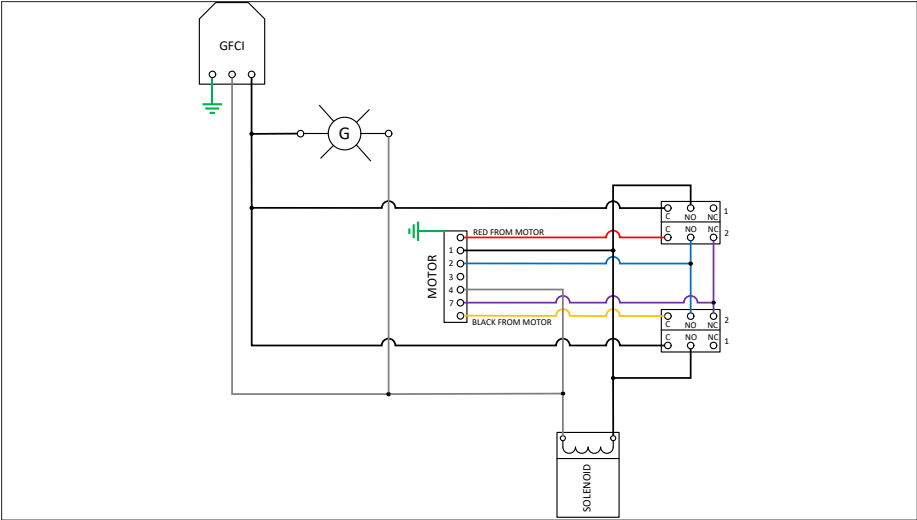
TROUBLESHOOTING

PROBLEM	PROBABLE CAUSE	REMEDY
Runs for short period of time and stops (power light remains on)	<ul style="list-style-type: none"> Leak in air control circuit Air switch leaking (rare) 	<ul style="list-style-type: none"> Disconnect power. Disconnect air hoses from air switches to allow foot pedal bellows to inflate to full height. Reconnect and tighten all connections Replace air switch
Runs in one direction only	<ul style="list-style-type: none"> Leak in air control circuit Faulty wire connection(s) Leak in footswitch air bellows or air hoses Faulty Air switch 	<ul style="list-style-type: none"> See Above Disconnect power. Check Wiring. Switch air hoses to isolate problem (machine or footswitch) Check air switches
Water leaking from base	<ul style="list-style-type: none"> Leak in water circuit plumbing Leak at shaft manifold seal 	<ul style="list-style-type: none"> Disconnect power. Check hoses and fittings for leaks. Check for leak where drive shaft enters shaft manifold.
Runs for short period of time and stops (power light off), GFCI trips/won't reset	<ul style="list-style-type: none"> Electrical short to ground 	<ul style="list-style-type: none"> If GFCI trips often call GoodwayProX. There may be an unsafe electrical condition!!
Motor runs but shaft does not turn	<ul style="list-style-type: none"> Problem with chain and/or sprockets Broken flexible shaft 	<ul style="list-style-type: none"> Disconnect power. Check chain and sprockets. Replace shaft fittings and/or core.
No water through flexible shaft	<ul style="list-style-type: none"> Problem with water supply Inlet screen clogged Main inlet solenoid valve not working 	<ul style="list-style-type: none"> Water supply not on, restrictions in hose or hose too small, water supply pressure insufficient. Remove hose and clean screen. Disconnect power. Check solenoid wiring and connections.

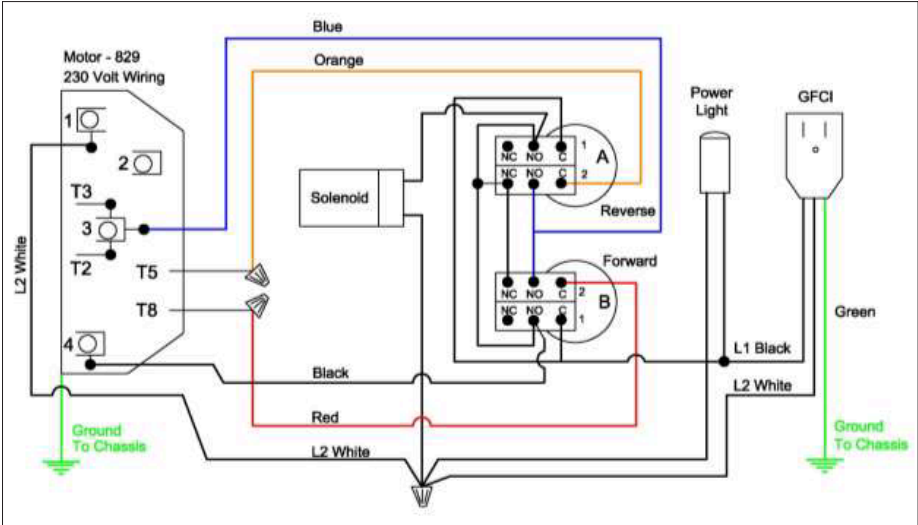
WIRING DIAGRAMS

RP-DX

RP-DX-60 (115VAC - 60 HZ)



RP-DX-A (230VAC - 50/60 HZ)



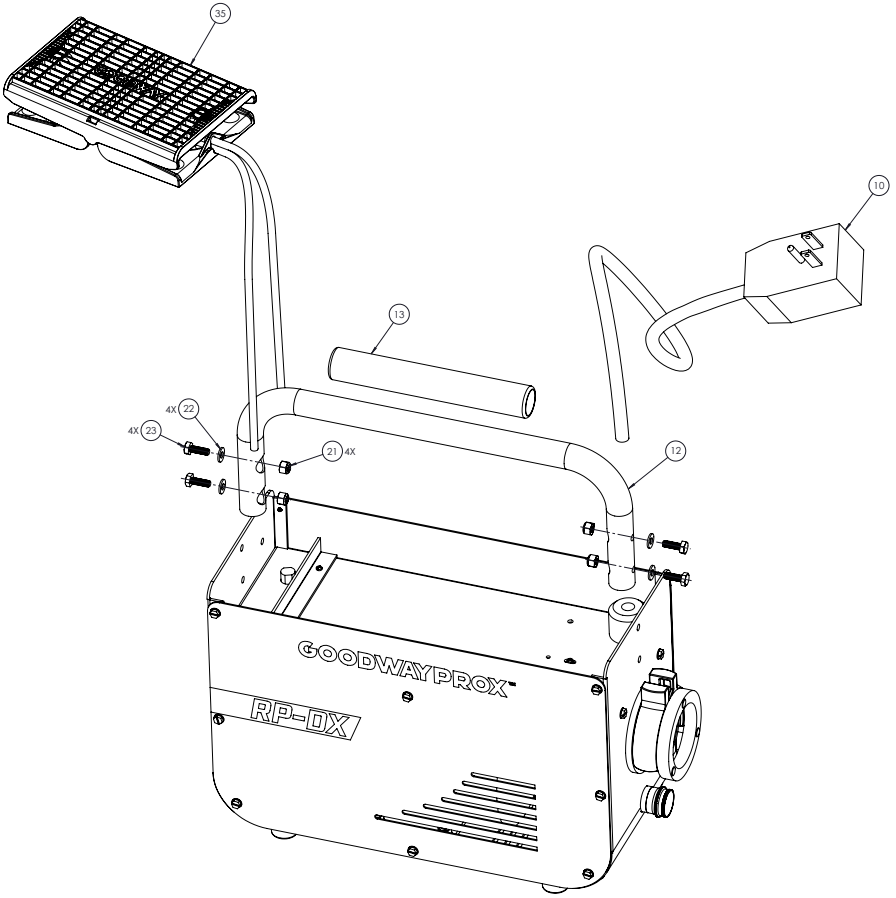
PARTS LIST/BREAKDOWN

ITEM NO.	PART NUMBER	DESCRIPTION	QTY.
1	X2-01	Base, RP-DX	1
2	RA-1552	Side, Left, RP-DX	1
3	RA-1553	Side, Right, RP-DX	1
4	X2-03	Shelf, RP-DX	1
5	X2-06	Side Brace, RP-DX	4
6	X2-07	Sprocket, 17T, 1/2" Bore	1
7	X2-08	Sprocket, 36T, 1/2" Bore	1
8	X2-09	Chain, 12"	1
9	X2-10	Light, 1/2" O.D.	1
10	842 or 842A	GFCI, 18/3 Cord, 12', RP-DX-60 uses 842, RP-DX-A uses 842A	1
11	X2-12	Stop, RP-DX	1
12	RA-1554	Handle, RP-DX	1
13	RA-1557	Foam Grip, 8" x 1/4" x 1" I.D.	1
14	M-AC-.25-48F-NDF or 829-W	Motor, RP-DX-60 uses M-AC-.25-48F-NDF (1/4 HP 115/230v 60 hz), RP-DX-A uses 829-W (1/2 HP 230v 50/60 hz)	1
15	834R-1	Pressure Switch, Air	2
16	HWST-1037-P	Screw, #10, Sheet Metal, 1/2"	6
17	HWS-1016-H	Screw, #10, Sheet Metal, Hex Head, 1/2"	20
18	HWS-1032-175P	Screw, 10-32, Panhead, 1-3/4"	1
19	HWS-2520-075SS	Screw, 1/4-20, Panhead, 3/4"	4
20	HWS-1024-163-SC	Screw, 10-24, Socket Cap, 1-5/8"	3
21	HWN-251	Nut, 1/4-20, Nylock	12
22	HWW-25ST	Washer, 1/4"	12
23	1234	Bolt, 1/4-20, Hex Head, 1"	8
24	808	Romex Fitting, Straight	1
25	842AX	Romex Fitting, 90°	1
26	9008	Foot, Rubber	4

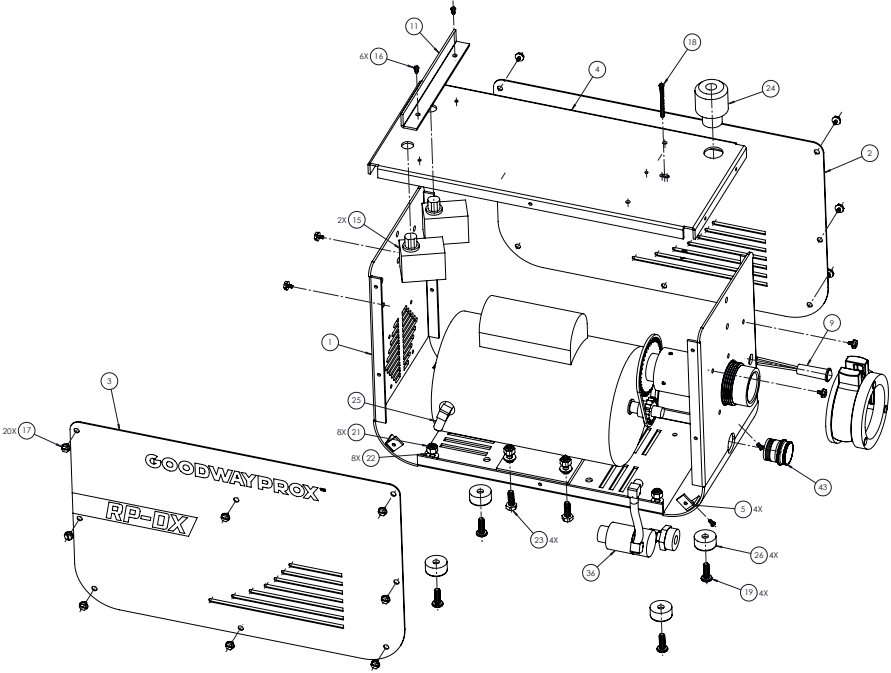
PARTS LIST/BREAKDOWN (CONTINUED)

ITEM NO.	PART NUMBER	DESCRIPTION	QTY.
27	SQC-01	Ring, Inner, SQC	1
28	SQC-02	Ring, Outer, SQC	1
29	SQC-07	Latch, SQC Manifold	2
30	SQC-08	Spacer, SQC Manifold	3
31	SQC-10	Spring, SQC Manifold	1
32	945	Spring Spacer, Manifold	1
33	979	Shaft Assembly, Short	1
34	SQC-03	Manifold, 823, SQC	1
35	834R-EX	Foot Pedal Assembly, Reversing, RP-DX	1
36	820	Solenoid, 115VAC	1
37	1718	Elbow, Brass, 1/8" Barb x 1/4" MNPT	2
38	825	Bearing, 1/2" x 1-1/8"	2
39	826	Internal Snap Ring, 1-1/8" O.D.	1
40	822	Elbow, Brass, 1/8" M, 90°	1
41	821	Adapter, Brass, 1/8" F x 1/2" M	1
42	935	Hose, 1/4" I.D.	1
43	802	1/2" NPT x F Garden Hose	1
44	824	Seal, 1/2" x 1"	1
45	RA-1558 or X2-13	RP-DX Wiring Harness, RP-DX-60 Uses RA-1558, RP-DX-A uses X2-13	1
46	935	Hose, 1/4 ID	1
47	802	1/2 NPT x F Garden Hose	1
48	824	Seal	1

EXPLODED VIEW

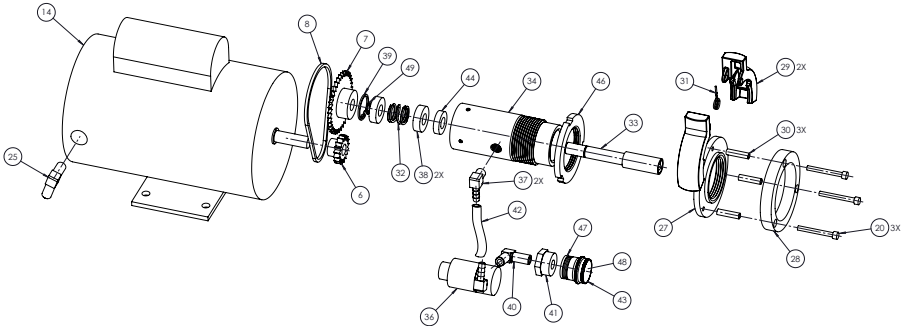


EXPLODED VIEW



SHOWN W/O FOOT PEDAL, HANDLE, & CORD
FOR CLARITY

EXPLODED VIEW



SHOWN W/O CASE FOR CLARITY

NOTES



SMART CLEANING & MAINTENANCE SOLUTIONS

GoodwayProX solutions are designed for professional contractors, and maintenance professionals in HVAC, plumbing, JanSan, and other markets.

Call Us: 888-368-0001

For Sales & Service Call: 203-616-2572 or 888-368-0001

GOODWAYPROX™

392 West Avenue, Stamford, CT 06902 USA

Tel: 203-616-2572 or 888-368-0001

Fax: 203-717-5330

Email: info@goodwayprox.com

Visit: www.goodwayprox.com

P/N: RP-DX

©Copyright 2025 GoodwayProX, Stamford, CT USA

Effective date February 11, 2025

GoodwayProX is a Trademark of Crossford International.

GoodwayProX reserves the right to improve products; contact the factory for the latest configuration and uses.